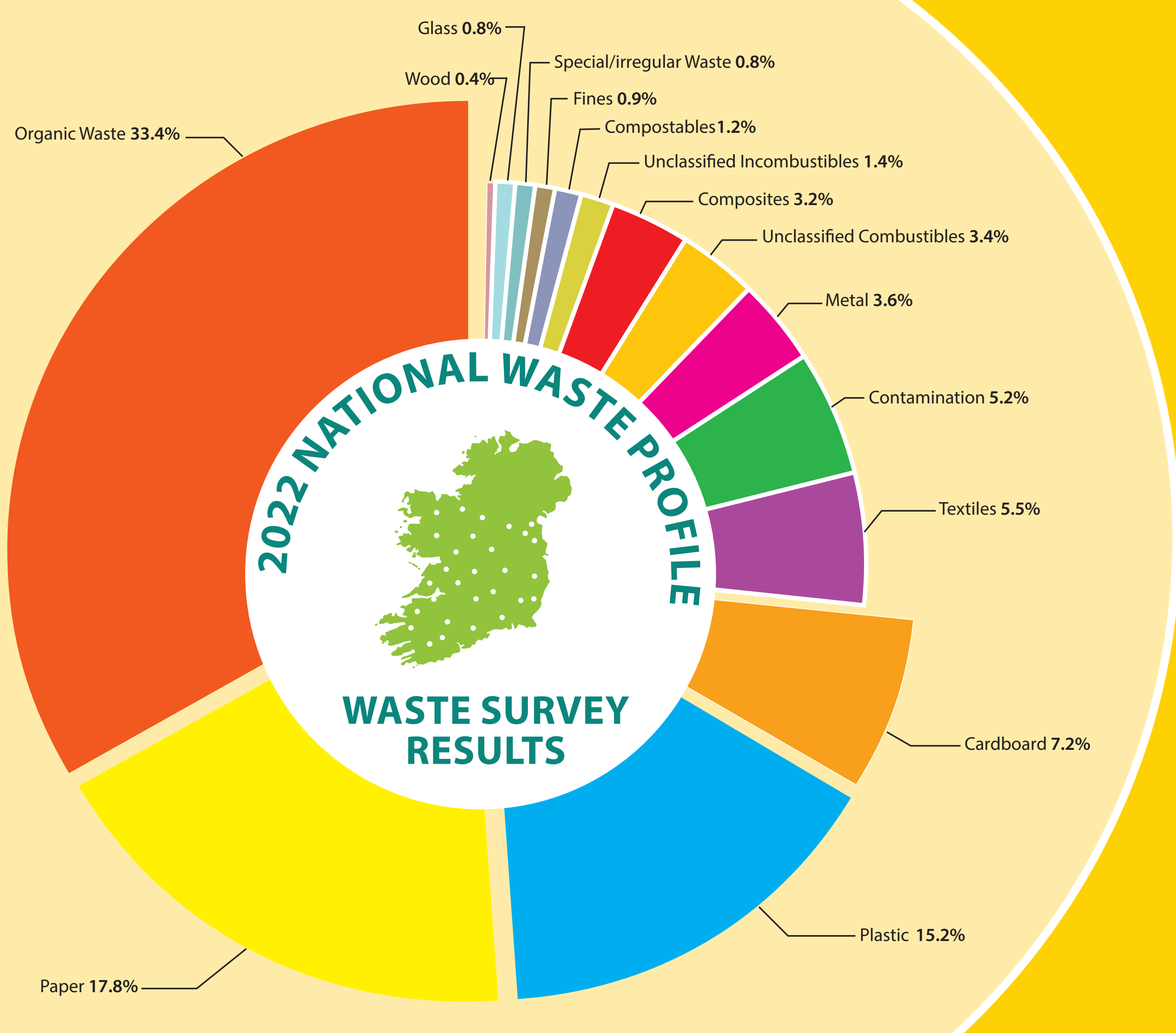


# Inside Ireland's Commercial Municipal Waste...



## Interesting findings from this survey...



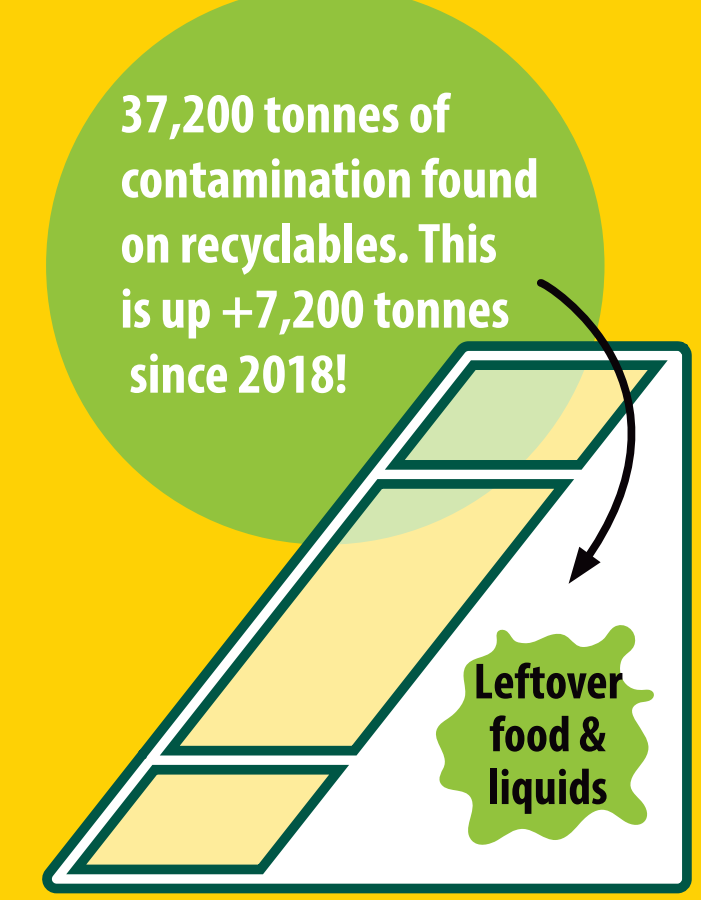
9,000 Tonnes of Plastic Milk Bottles  
9,000 Tonnes of Disposable Cups



These materials could be reduced through reusable alternatives.

**Paper Down -21,500 Tonnes**  
Magazines & Glossy – 6,300 Tonnes  
Office Paper – 4,600 Tonnes  
Newspapers – 3,400 Tonnes

This is potentially due to increased working from home and digitalisation of office document, newspapers & magazines.

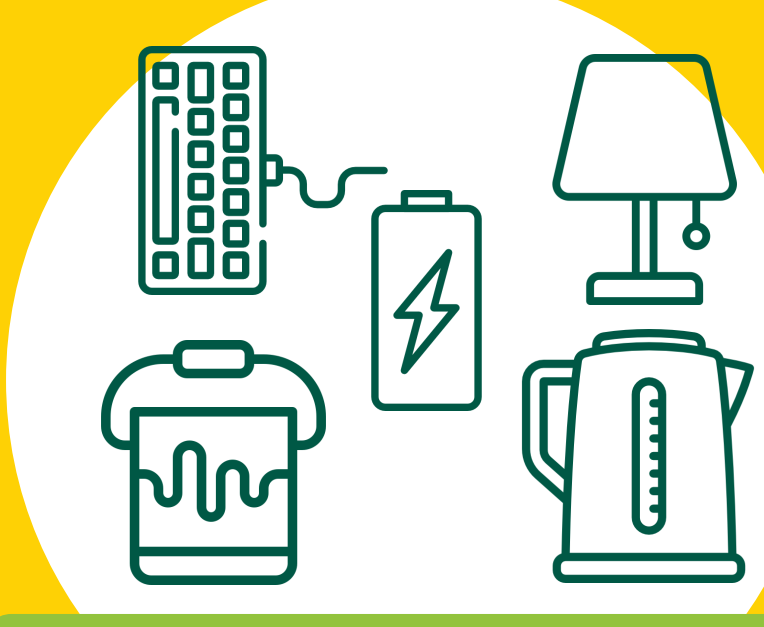


37,200 tonnes of contamination found on recyclables. This is up +7,200 tonnes since 2018!



17,200 Tonnes of liquid waste left in plastic bottles

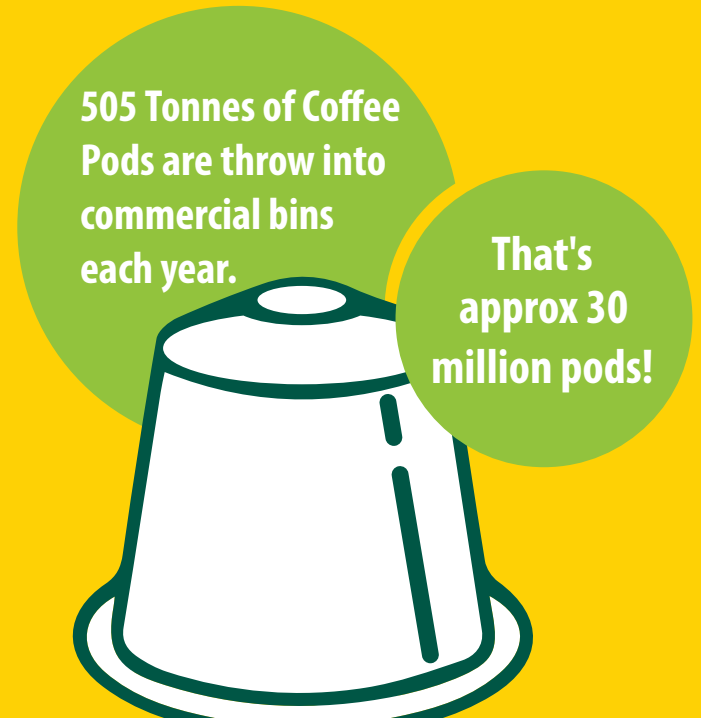
4,700 Tonnes of Special Wastes including Hazardous Wastes



These items should be managed through civic amenity sites or collected separately



Single Use Plastic accounts for 18% of the Total Commercial Municipal Waste (125,000 tonnes)

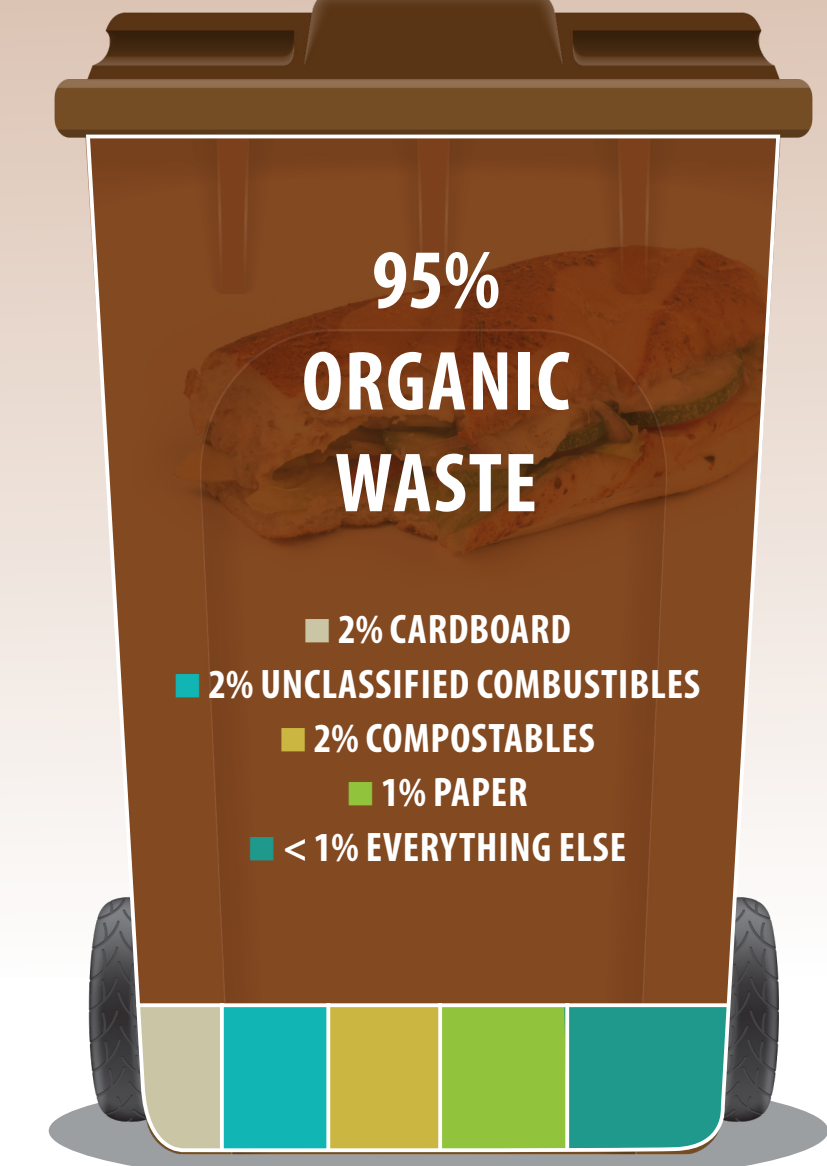


505 Tonnes of Coffee Pods are thrown into commercial bins each year. That's approx 30 million pods!

Here is what we found in each waste stream...



### ORGANIC WASTE BIN



95% were in the correct bin  
4% could go to general bins  
1% could have been recycled

### ORGANIC WASTE BIN



79% were in the correct bins  
10% could go into organic bins  
13% could go to general bins

### GENERAL WASTE



26% were in the correct bin  
32% could go into organic bins  
37% could have been recycled  
5% should go to CA Sites

## What the waste industry needs to do

The commercial sector needs more support from the waste industry to improve segregation.



Provide organic waste bins to all commercial premises to make food waste segregation easier.



Improved and more transparent waste collection charging to incentivise and reward waste segregation.



Targeted awareness and education campaigns to motivate the commercial sector to reduce and segregate their waste particularly food waste and other recyclables.

## What the commercial sector should do to improve waste segregation



Use different coloured bins/bags for each waste stream



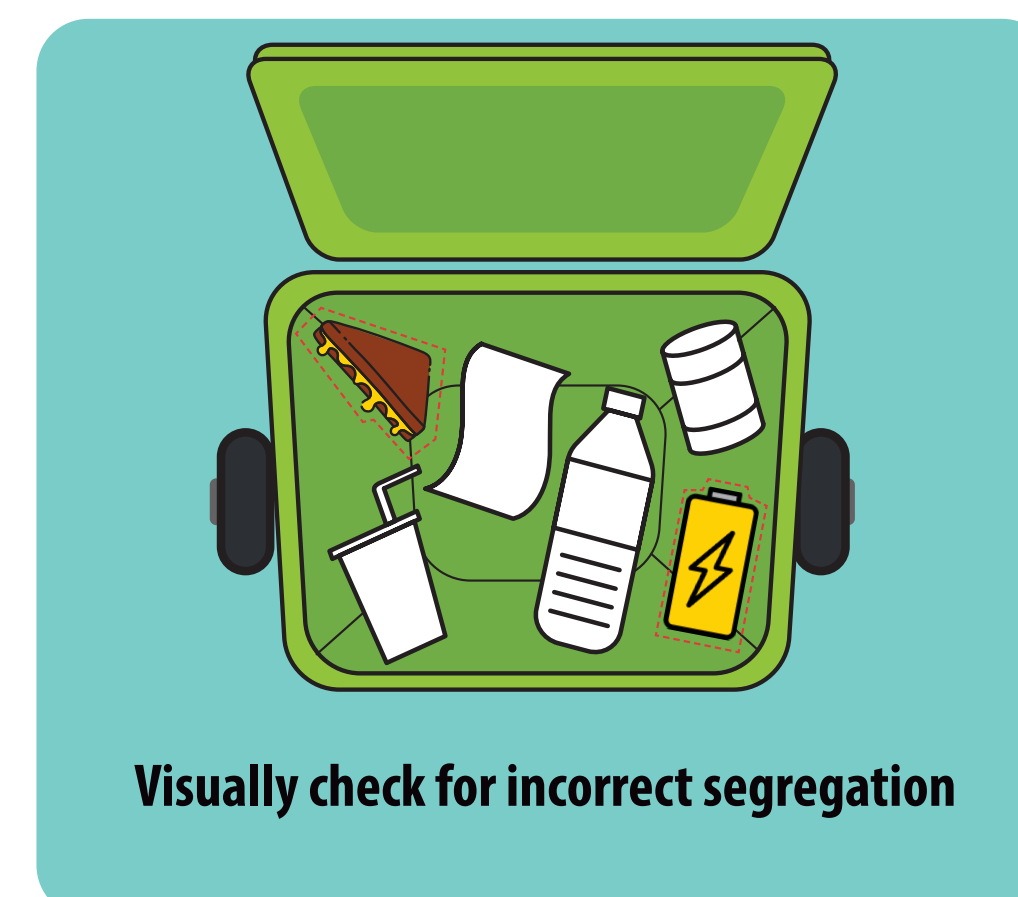
Have clear consistent signage on all bins (internal & external)



Highlight problematic wastes and provide guidance and training on how to improve/avoid contamination



All external bins should be placed in a well designated, accessible location



Visually check for incorrect segregation



If unsure about certain wastes, engage with waste collectors for advice on proper management and staff training

**What Government needs to do**  
Enforcement of food waste segregation, initially in the food services sector and then across all sectors.

