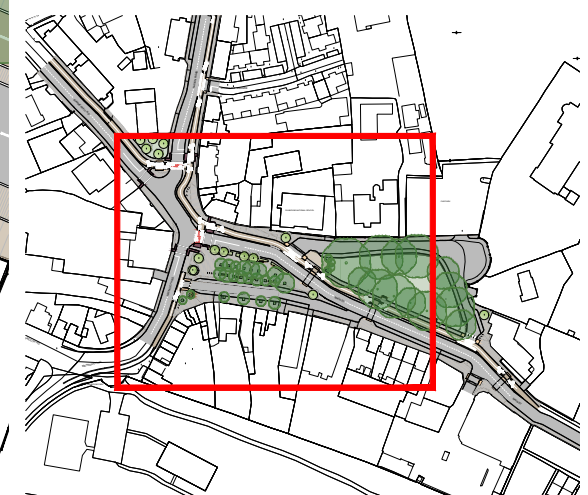


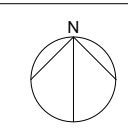
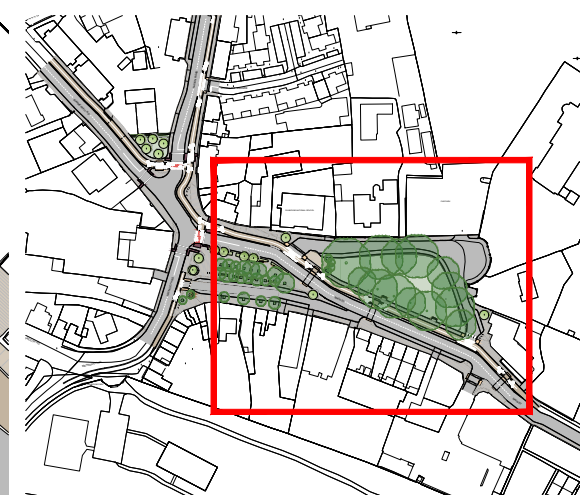
PUBLIC REALM PLAN LEGEND

-  HIGH QUALITY SURFACING TO FOOTPATHS, RAISED CROSSINGS & PARKING BAYS (e.g. NATURAL STONE PAVING SLABS/ SETTS)
-  BUFF COLOURED ASPHALT SURFACING TO CYCLE TRACK
-  ASPHALT SURFACING TO CARRIAGEWAY
-  TACTILE PAVING (CONTROLLED CROSSING)
-  TACTILE PAVING (UNCONTROLLED CROSSING)
-  PROPOSED LOW LEVEL PLANTING
-  EXISTING / PROPOSED GRASS AREA
-  PROPOSED TREE PLANTING
-  EXISTING TREE TO BE RETAINED

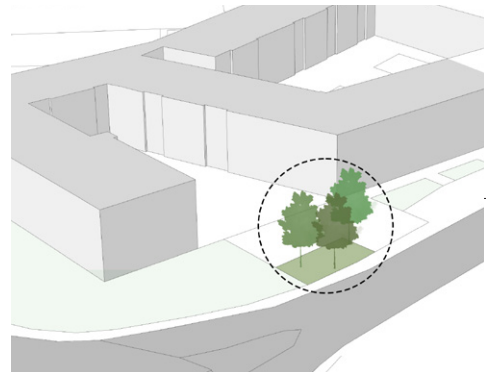


PUBLIC REALM PLAN LEGEND

-  HIGH QUALITY SURFACING TO FOOTPATHS, RAISED CROSSINGS & PARKING BAYS (e.g. NATURAL STONE PAVING SLABS/ SETTS)
-  BUFF COLOURED ASPHALT SURFACING TO CYCLE TRACK
-  ASPHALT SURFACING TO CARRIAGEWAY
-  TACTILE PAVING (CONTROLLED CROSSING)
-  TACTILE PAVING (UNCONTROLLED CROSSING)
-  PROPOSED LOW LEVEL PLANTING
-  EXISTING / PROPOSED GRASS AREA
-  PROPOSED TREE PLANTING
-  EXISTING TREE TO BE RETAINED



© COPYRIGHT 2024 EAMONN BYRNE LANDSCAPE ARCHITECTS



EXISTING SEMI-PRIVATE AREA
 POTENTIAL SEMI-PRIVATE SPACE
 IMPROVEMENT TO ENHANCE APPROACH
 INTO TOWN

EXISTING GREEN SPACE
 OPPORTUNITY FOR
 EXISTING PLANTING
 ENHANCEMENT

EXISTING PARKING AREA
 OPPORTUNITY FOR BOUNDARY
 IMPROVEMENT / TREE PLANTING

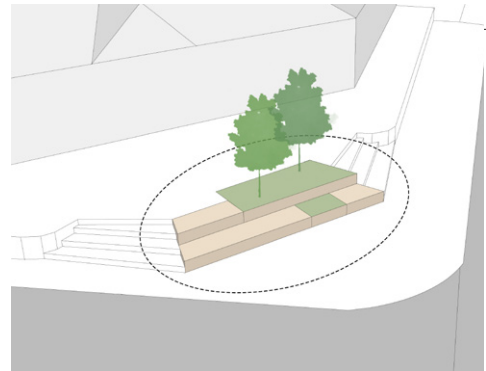
EXISTING SEATING AREA
 OPPORTUNITY FOR SEATING
 AND PLANTING IMPROVEMENTS

EXISTING FOOTPATH
 OPPORTUNITY FOR STREETSCAPE /
 FOOTPATH IMPROVEMENTS

EXISTING BOUNDARIES
 OPPORTUNITY FOR BOUNDARY
 IMPROVEMENTS

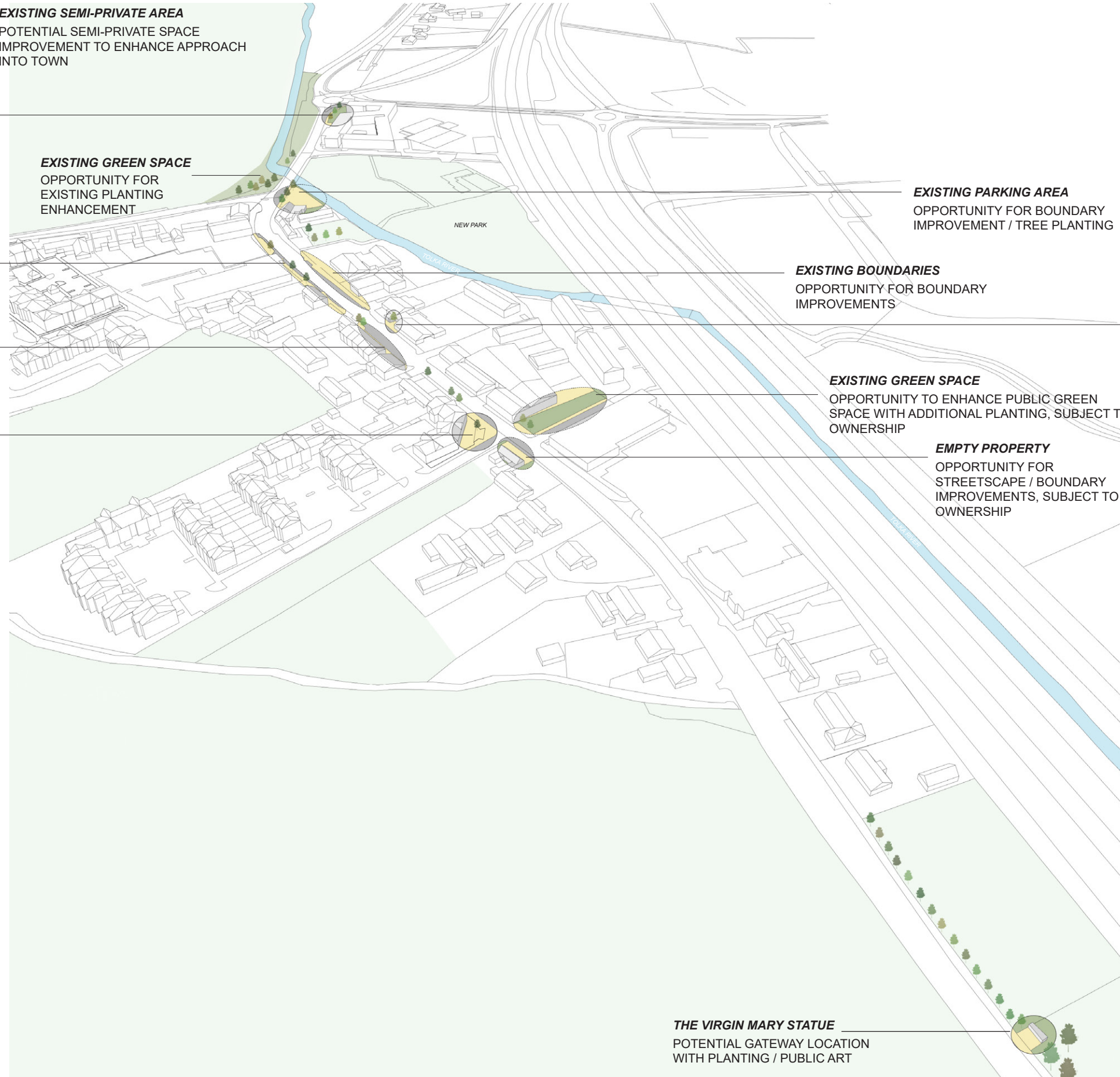
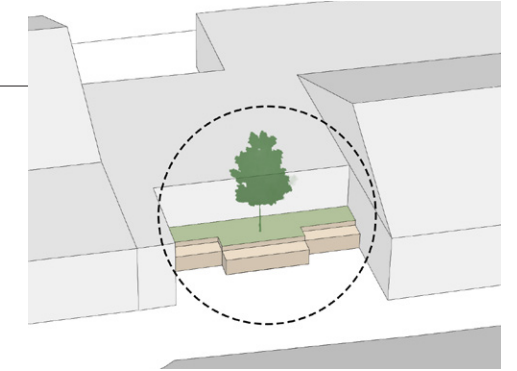
EXISTING OUTDOOR SPACE
 OPPORTUNITY FOR STREETSCAPE /
 FOOTPATH IMPROVEMENTS

EXISTING GREEN SPACE
 OPPORTUNITY TO ENHANCE PUBLIC GREEN
 SPACE WITH ADDITIONAL PLANTING, SUBJECT TO
 OWNERSHIP



EXISTING STAIRS AND SHOP FRONTAGE
 OPPORTUNITY FOR STREETSCAPE /
 SEATING / TREE PLANTING
 IMPROVEMENTS

EMPTY PROPERTY
 OPPORTUNITY FOR
 STREETSCAPE / BOUNDARY
 IMPROVEMENTS, SUBJECT TO
 OWNERSHIP



THE VIRGIN MARY STATUE
 POTENTIAL GATEWAY LOCATION
 WITH PLANTING / PUBLIC ART





Illustrative Examples of Public Realm Improvements: Squares & Streetscapes